

Installing and Activating Windows 11

Additionally, you'll need:

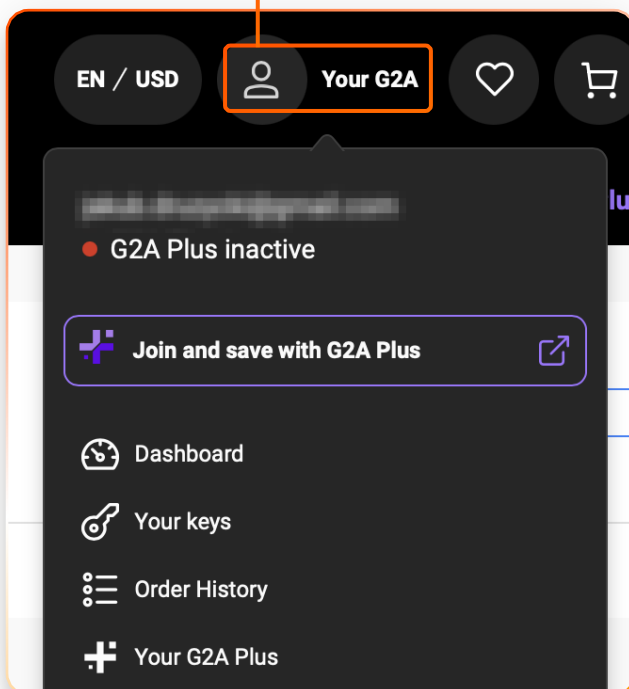
- > Empty USB drive of minimum 8 GB;
- > Another computer with an internet connection and at least Windows 8 or newer installed on it.

Before we begin working with Windows 11, we must obtain the product key from G2A.COM. Next, we will create a bootable USB drive with the operating system image. Finally, we will install and activate Windows 11.

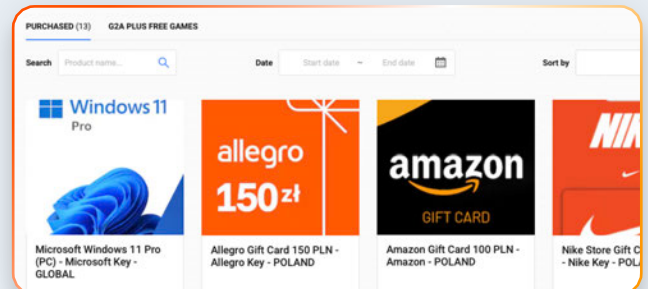
Step 1

Finding the purchased Windows 11 key on G2A.COM

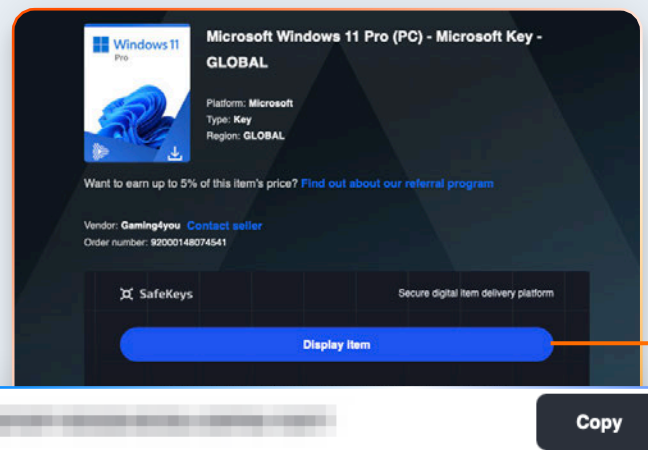
1 After purchasing Windows 11, go to your Dashboard. Sign in to your G2A.COM account, **click the ▼ icon**, and select the **Dashboard** option.



2 On the new page, select **Your keys** to view your purchased items and click **Get item** to open the product details.



3 You will see the purchased item – in this case Windows 11 Pro. To obtain your activation key, **click the ▼ icon**. After a moment, the key will appear. Write it down – you will need it during the installation.



Step 2

Creating a bootable USB drive with Windows 11

- 1 On a Windows computer, **insert the USB drive** you will use to store the system image and remember its drive letter.
- 2 Download the **Media Creation Tool** from Microsoft using the provided [LINK](#) and launch it.
- 3 The installation image creation process will begin. Select the **language** and **Windows version**, then click

Select language and edition

Please select from one of the available options to continue.

Language: English (United States)

Edition: Windows 11

- 4 In the next step, **select the option** to create installation media and click **Choose your USB drive** (minimum 8 GB) and choose

Choose which media to use

If you want to install Windows 11 on another partition, you need to create and format a new partition.

USB flash drive

Select a USB flash drive

The files on your USB drive will be deleted. To keep these files, back them up now.

Refresh drive list

Removable drives

D: (ESD-USB)

- 5 The tool will prepare the USB drive as a Windows installation device. When done, close the application by choosing and unplug the USB.

Step 3

Installing Windows 11 from the USB drive

- 1 On the powered-off computer where you want to install Windows 11, **insert the bootable USB** created earlier and **turn the computer on**. The machine should automatically detect the USB installer and begin setup.
- 2 Select your **language, time, and currency format**, then click . Choose your keyboard layout and continue with . **Select** and click on

Select language settings

Language to install: English (United States)

Time and currency format: English (United States)

Select setup option

Install the latest version of Windows 11, or repair your PC. If you're installing Windows 11 on a new PC, files, apps, and settings will be deleted.

I would like to

Install Windows 11

Repair my PC

I agree everything will be deleted including files, apps, and settings

- 3 Accept the license terms by choosing **Enter the the key** you obtained from G2A.COM. The installer will automatically detect the edition based on the key.

Product key

The product key should be with the box the DVD came in or on your email receipt. It looks similar to this: XXXXX-XXXXX-XXXXX-XXXXX-XXXXX

Enter Product key

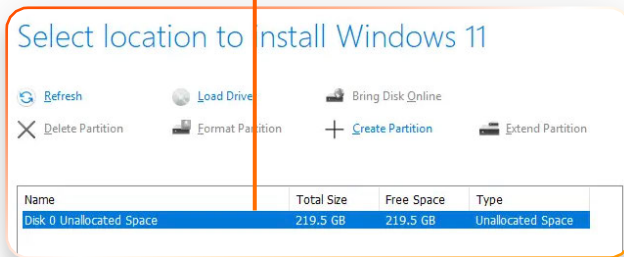
Dashes will be added automatically

SafeKeys

Secure digital item delivery platform

Copy

- 4** Select the disk on which to **install Windows 11** and click **Next**. Then choose the option **Install** to begin installation.



- 5** The installation process will begin. The computer may restart multiple times – **do not interrupt**.

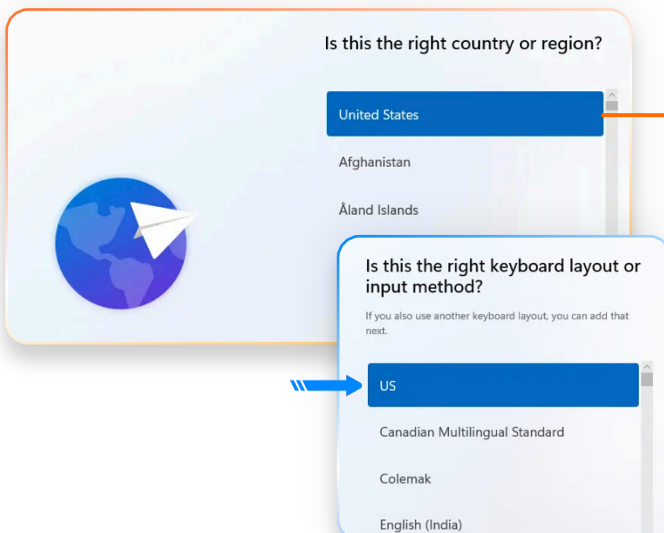
Installing Windows 11

Your PC will restart several times. This might take a while.

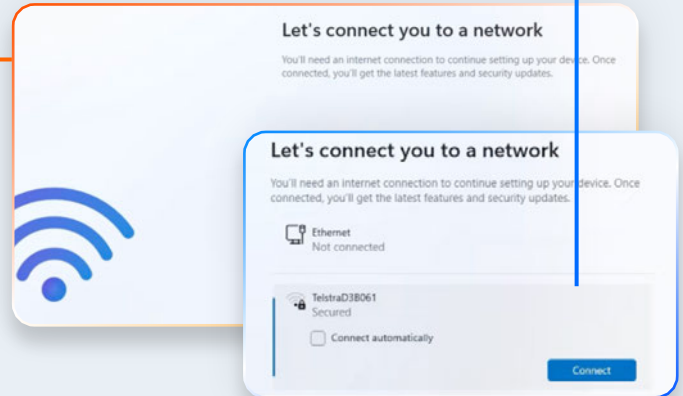
10% complete

Installing 0%
Please keep your computer on.

- 6** Before the installation finishes, you will configure basic system settings and your Windows account. **Select your region** and click on **Yes**. **Choose keyboard layout**, then continue by pressing **Yes** and **Skip**.

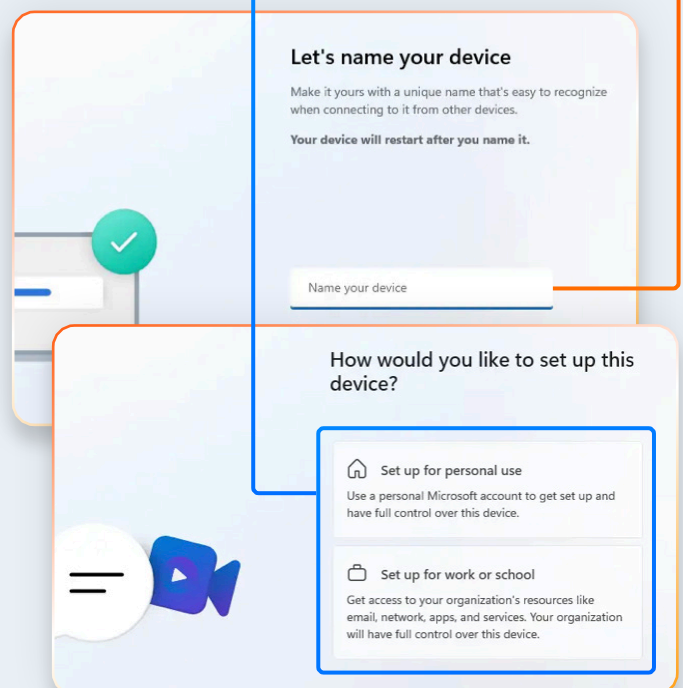


- 7** If you have an Internet connection, it is recommended to connect now so the system can download essential updates. **On this screen** click on **Next**. **Choose your Wi-Fi network** or connect via Ethernet and proceed – click on **Next**.



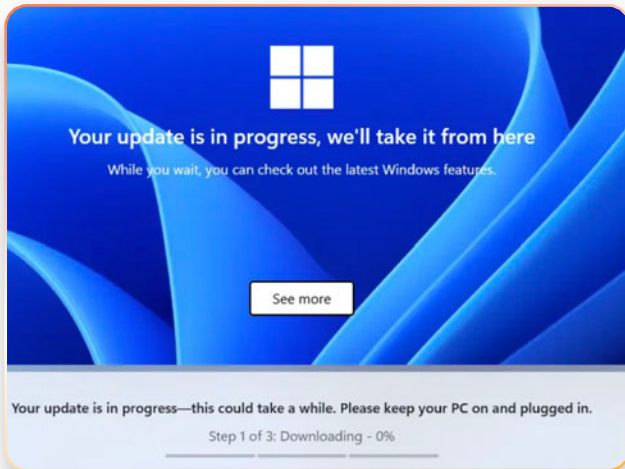
- 8** The system will download necessary updates and may restart. **Accept the license terms** again to proceed by choosing **Accept**.

- 9** Enter a **name for your computer**, then continue **Next**. Decide whether the device will be used for **home or business** and click on **Next**.



10

Windows will check for updates – **this may take up to 30 minutes.**



11

Sign in to your Microsoft account, entering your email and password. Click on **Next** and **Skip for now**. Choose **Create PIN**, **check the** and enter it twice. Click on **OK**

Set up a PIN

A Windows Hello PIN is a fast, secure way to sign in to your device, apps, and services.

 Include letters and symbols

Set up a PIN

A Windows Hello PIN is a fast, secure way to sign in to your device, apps and services.

 Include letters and symbols

12

Select your privacy and device setup preferences and click on **Accept**, **click on** and twice on **Skip** and again **Accept**

Let's customize your experience

Select all the ways you plan to use your device to get personalized tips, ads, and recommendations within Microsoft experiences. You can always change this in Settings. [Learn more](#)

 Entertainment
Watch videos, browse the web, connect on social media

 Gaming
Play and discover games, keep up with new releases

 School
Take notes, write essays, collaborate on projects

 Creativity
Bring your ideas to life with photos and videos

 Business
Track expenses, manage your business, chat with customers

 Family
Connect with family members, edit safety settings, give everyone their own profile on this device

13

Decline the trial version of Microsoft 365 and continue. Turn off optional settings if desired and click on **Next** and **Skip**

Windows 11 installation is now complete.

Need to know

When entering the product key, carefully check that it has been entered correctly. If a message appears stating that the key has already been used, don't worry. Contact the seller on the G2A.COM platform and ask them to resolve the issue.